

Allegro

7

13

19

26

33

39

48

54

60

Joseph Haydn - Symphony No. 2

2

66 *f*

73

79 *p*

85 *pp*

91 *f*

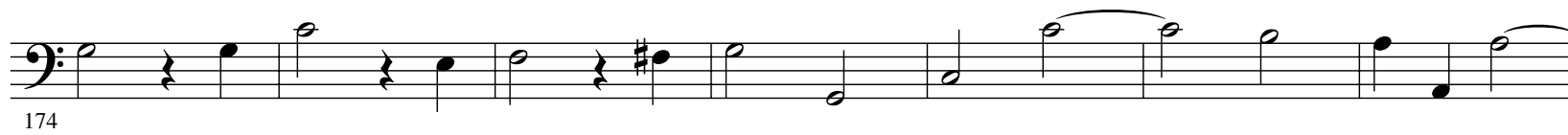
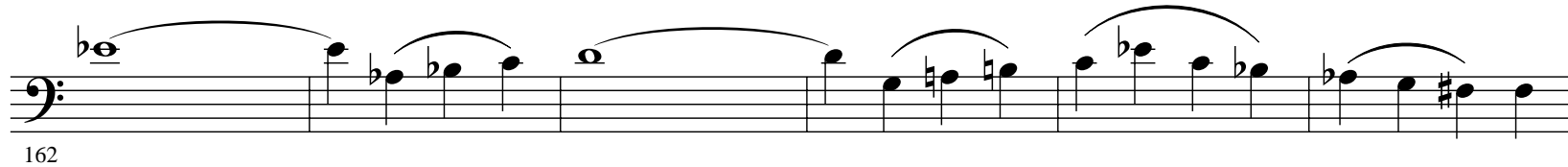
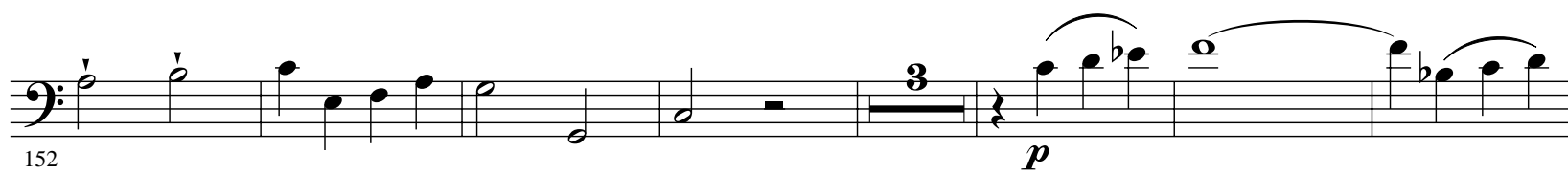
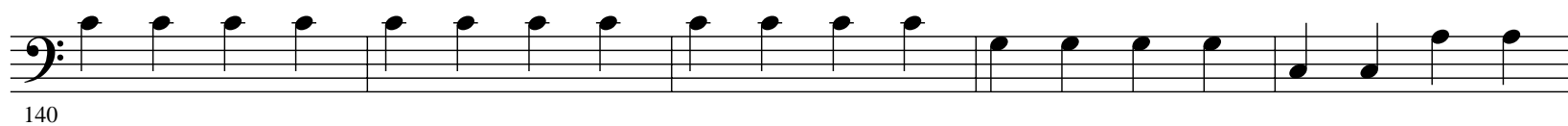
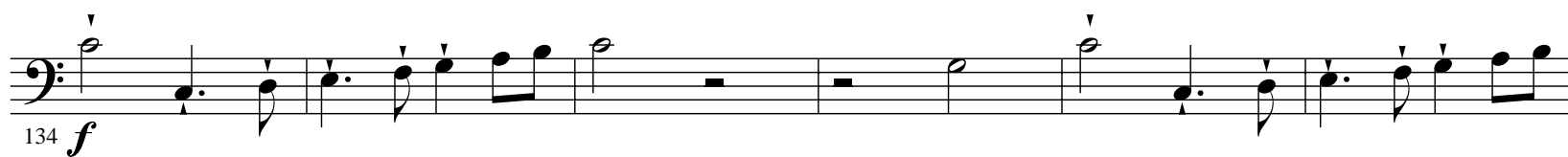
98

104

110 *ppp*

116

122



Joseph Haydn - Symphony No. 2

4

Andante

II

sempre p

7

14

21

28

35

42

49

54

60

66

72

III. Finale.

Presto

f

9

18 *p*

26 5

37 *f*

45

53 5 *p*

64 2

72 3 3

Joseph Haydn - Symphony No. 2

6

83

94

105 *p*

116 *f*

127 *pp*

138

150

161 *f*

172

184 *p*

196 5

210 *f*

221

Detailed description: This page contains the bassoon part of Joseph Haydn's Symphony No. 2, measures 83 through 221. The music is written in bass clef with a key signature of one flat (B-flat major or D minor). The score consists of 14 staves of music. Measure numbers are printed at the beginning of each staff. Dynamic markings include *p* (piano), *pp* (pianissimo), and *f* (forte). A fingering '5' is indicated above a note in measure 196. The piece concludes with a double bar line at the end of measure 221.

