

Daily Scales



Bentgen Music

Major Scales

B Major

Sheet music for the B Major scale in bass clef, 4/4 time. The scale is written in a single line with a repeat sign at the end. Chords B, E, A, D, G, and D are indicated above the notes. Fingering numbers are provided below the notes. A trill is marked above the final G note.

Cb Major

Sheet music for the Cb Major scale in bass clef, 4/4 time. The scale is written in a single line with a repeat sign at the end. Chords B, E, A, D, G, and D are indicated above the notes. Fingering numbers are provided below the notes. A trill is marked above the final G note.

C Major

Sheet music for the C Major scale in bass clef, 4/4 time. The scale is written in a single line with a repeat sign at the end. Chords B, E, A, D, G, and D are indicated above the notes. Fingering numbers are provided below the notes. A trill is marked above the final G note.

C# Major

Sheet music for the C# Major scale in bass clef, 4/4 time. The scale is written in a single line with a repeat sign at the end. Chords B, E, A, D, G, and D are indicated above the notes. Fingering numbers are provided below the notes. A trill is marked above the final G note.

Db Major

Sheet music for the Db Major scale in bass clef, 4/4 time. The scale is written in a single line with a repeat sign at the end. Chords B, E, A, D, G, and D are indicated above the notes. Fingering numbers are provided below the notes. A trill is marked above the final G note.

D Major

Sheet music for the D Major scale in bass clef, 4/4 time. The scale is written in a single line with a repeat sign at the end. Chords B, E, A, D, G, and D are indicated above the notes. Fingering numbers are provided below the notes. A trill is marked above the final G note.

Eb Major

Sheet music for the Eb Major scale in bass clef, 4/4 time. The scale is written in a single line with a repeat sign at the end. Chords B, E, A, D, G, and D are indicated above the notes. Fingering numbers are provided below the notes. Trills are marked above the final G and D notes.

E Major

Sheet music for the E Major scale in bass clef, 4/4 time. The scale is written in a single line with a repeat sign at the end. Chords E, A, D, G, and D are indicated above the notes. Fingering numbers are provided below the notes. Trills are marked above the final G and D notes.

Major Scales

F Major

1 4 0 1 4 0 2 4 4 0 2 4 1 4 2 4 4 1 3 1 3 + 2 3 3 2 + 3 1 3 1 4 4 2 4 1 4 2 0 4 4 2 0 4 1 0 4 1

F# Major

1 4 2 4 1 4 2 4 4 1 2 4 1 4 2 4 4 1 3 1 3 1 2 3 3 2 1 3 1 3 1 4 4 2 4 1 4 2 1 4 4 2 4 1 4 2 4 1

Gb Major

1 4 2 4 1 4 2 4 4 1 2 4 1 4 2 4 4 1 3 1 3 1 2 3 3 2 1 3 1 3 1 4 4 2 4 1 4 2 1 4 4 2 4 1 4 2 4 1

G Major

2 0 1 2 0 1 2 4 4 1 2 4 1 4 2 3 3 1 3 1 3 1 2 3 3 2 1 3 1 3 1 3 3 2 4 1 4 2 1 4 4 2 1 0 2 1 0 2

Ab Major

4 1 2 4 1 4 2 4 4 1 2 4 1 4 2 3 3 1 3 1 3 1 2 3 3 2 1 3 1 3 1 3 3 2 4 1 4 2 1 4 4 2 4 1 4 2 1 4

A Major

0 1 4 0 1 4 2 4 4 1 2 4 1 4 2 3 3 1 3 1 3 1 2 3 3 2 1 3 1 3 1 3 3 2 4 1 4 2 1 4 4 2 4 1 0 4 1 0

Bb Major

1 4 0 1 4 0 2 4 4 1 4 1 4 + 2 3 3 1 3 1 3 1 2 3 3 2 1 3 1 3 1 3 3 2 + 4 1 4 1 4 4 2 0 4 1 0 4 1

Major Scales

B Major

1 4 2 4 1 4 2 4 4 1 4 1 4 + 2 3 3 1 3 1 3 1 2 3 3 2 1 3 1 3 1 3 3 2 + 4 1 4 1 4 4 2 4 1 4 2 4 1

Cb Major

1 4 2 4 1 4 2 4 4 1 4 1 4 + 2 3 3 1 3 1 3 1 2 3 3 2 1 3 1 3 1 3 3 2 + 4 1 4 1 4 4 2 4 1 4 2 4 1

C Major

4 0 2 4 1 4 2 4 4 1 4 1 3 + 2 3 3 1 3 1 3 1 2 3 3 2 1 3 1 3 1 3 3 2 + 3 1 4 1 4 4 2 4 1 4 2 0 4

C# Major

4 1 2 4 1 4 2 4 4 1 4 1 3 + 2 3 3 1 3 1 3 1 2 3 3 2 1 3 1 3 1 3 3 2 + 3 1 4 1 4 4 2 4 1 4 2 1 4

Db Major

4 1 2 4 1 4 2 4 4 1 4 1 3 + 2 3 3 1 3 1 3 1 2 3 3 2 1 3 1 3 1 3 3 2 + 3 1 4 1 4 4 2 4 1 4 2 1 4

D Major

0 1 4 0 1 4 2 4 4 1 4 1 3 + 2 3 3 1 3 1 3 1 2 3 3 2 1 3 1 3 1 3 3 2 + 3 1 4 1 4 4 2 4 1 0 4 1 0

Eb Major

1 4 2 4 1 4 2 4 4 1 3 1 3 + 2 3 3 1 3 1 3 1 2 3 3 2 1 3 1 3 1 3 3 2 + 3 1 3 1 4 4 2 4 1 4 2 4 1

Harmonic Minor Scales

B Harmonic Minor

C Harmonic Minor

C# Harmonic Minor

D Harmonic Minor

D# Harmonic Minor

Eb Harmonic Minor

E Harmonic Minor

Harmonic Minor Scales

F Harmonic Minor

1 4 1 4 1 2 2 4 4 1 1 4 1 2 2 4 4 2 3 + 1 2 2 3 3 2 2 1 + 3 2 4 4 2 2 1 4 1 1 4 4 2 2 1 4 1 4 1

F# Harmonic Minor

1 4 1 4 1 2 2 4 4 1 1 4 1 2 2 4 4 2 3 + 1 2 2 3 3 2 2 1 + 3 2 4 4 2 2 1 4 1 1 4 4 2 2 1 4 1 4 1

G Harmonic Minor

4 0 1 4 2 4 2 4 4 1 1 4 1 2 2 3 3 + 1 3 1 2 2 3 3 2 2 1 3 1 + 3 3 2 2 1 4 1 1 4 4 2 4 2 4 1 0 4

G# Harmonic Minor

4 1 1 4 1 2 2 4 4 1 1 4 1 2 2 3 3 + 1 3 1 2 2 3 3 2 2 1 3 1 + 3 3 2 2 1 4 1 1 4 4 2 2 1 4 1 1 4

Ab Harmonic Minor

4 1 1 4 1 2 2 4 4 1 1 4 1 2 2 3 3 + 1 3 1 2 2 3 3 2 2 1 3 1 + 3 3 2 2 1 4 1 1 4 4 2 2 1 4 1 1 4

A Harmonic Minor

0 1 2 0 1 2 2 4 4 1 1 4 1 2 2 3 3 + 1 3 1 2 2 3 3 2 2 1 3 1 + 3 3 2 2 1 4 1 1 4 4 2 2 1 0 2 1 0

A# Harmonic Minor

1 4 1 4 1 2 2 4 4 1 1 4 1 2 2 3 3 + 1 3 1 2 2 3 3 2 2 1 3 1 + 3 3 2 2 1 4 1 1 4 4 2 2 1 4 1 4 1

Harmonic Minor Scales

Bb Harmonic Minor

1 4 1 4 1 2 2 4 4 1 1 4 1 2 2 3 3 + 1 3 1 2 2 3 3 2 2 1 3 1 + 3 3 2 2 1 4 1 1 4 4 2 2 1 4 1 4 1

B Harmonic Minor

1 4 1 4 1 2 2 4 4 1 1 4 1 2 2 3 3 + 1 3 1 2 2 3 3 2 2 1 3 1 + 3 3 2 2 1 4 1 1 4 4 2 2 1 4 1 4 1

C Harmonic Minor

4 0 1 4 2 4 2 4 4 1 1 4 1 2 2 3 3 + 1 3 1 2 2 3 3 2 2 1 3 1 + 3 3 2 2 1 4 1 1 4 4 2 4 2 4 1 0 4

C# Harmonic Minor

4 1 1 4 1 2 2 4 4 1 1 4 1 2 2 3 3 + 1 3 1 2 2 3 3 2 2 1 3 1 + 3 3 2 2 1 4 1 1 4 4 2 2 1 4 1 1 4

D Harmonic Minor

0 1 2 0 1 2 2 4 3 1 1 3 1 2 2 3 3 + 1 3 1 2 2 3 3 2 2 1 3 1 + 3 3 2 2 1 3 1 1 3 4 2 2 1 0 2 1 0

D# Harmonic Minor

1 4 1 4 1 2 2 4 4 2 4 + 1 2 2 3 3 + 1 3 1 2 2 3 3 2 2 1 3 1 + 3 3 2 2 1 + 4 2 4 4 2 2 1 4 1 4 1

Eb Harmonic Minor

1 4 1 4 1 2 2 4 4 2 4 + 1 2 2 3 3 + 1 3 1 2 2 3 3 2 2 1 3 1 + 3 3 2 2 1 + 4 2 4 4 2 2 1 4 1 4 1

Melodic Minor Scales

B Melodic Minor

B C D E F# G A B

C Melodic Minor

C D E F G A B C

C# Melodic Minor

C# D# E F# G A B C#

D Melodic Minor

D E F G A B C D

D# Melodic Minor

D# E F# G A B C D#

Eb Melodic Minor

Eb F G Ab Bb C D Eb

E Melodic Minor

E F G Ab Bb C D E

Melodic Minor Scales

F Melodic Minor

1 4 1 4 1 4 2 4 4 1 1 4 1 4 2 4 4 2 3 + 1 3 2 3 3 1 2 1 + 3 2 4 4 1 2 1 4 1 1 4 4 1 2 1 4 1 4 1

F# Melodic Minor

1 4 1 4 1 4 2 4 4 1 1 4 1 4 2 4 4 2 3 + 1 3 2 3 3 1 2 1 + 3 2 4 4 1 2 1 4 1 1 4 4 1 2 1 4 1 4 1

G Melodic Minor

4 0 1 4 1 4 2 4 4 1 1 4 1 4 2 3 3 + 1 3 1 3 2 3 3 1 2 1 3 1 + 3 3 1 2 1 4 1 1 4 4 1 2 1 4 1 0 4

G# Melodic Minor

4 1 1 4 1 4 2 4 4 1 1 4 1 4 2 3 3 + 1 3 1 3 2 3 3 1 2 1 3 1 + 3 3 1 2 1 4 1 1 4 4 1 2 1 4 1 1 4

A^b Melodic Minor

4 1 1 4 1 4 2 4 4 1 1 4 1 4 2 3 3 + 1 3 1 3 2 3 3 1 2 1 3 1 + 3 3 1 2 1 4 1 1 4 4 1 2 1 4 1 1 4

A Melodic Minor

0 1 2 0 1 4 2 4 4 1 1 4 1 4 2 3 3 + 1 3 1 3 2 3 3 1 2 1 3 1 + 3 3 1 2 1 4 1 1 4 4 1 2 1 0 2 1 0

A# Melodic Minor

1 4 1 4 1 4 2 4 4 1 1 4 1 3 2 3 3 + 1 3 1 3 2 3 3 1 2 1 3 1 + 3 3 1 2 1 4 1 1 4 4 1 2 1 4 1 4 1

Melodic Minor Scales

Bb Melodic Minor

1 4 1 4 1 4 2 4 4 1 1 4 1 3 2 3 3 + 1 3 1 3 2 3 3 1 2 1 3 1 + 3 3 1 2 1 4 1 1 4 4 1 2 1 4 1 4 1

B Melodic Minor

1 4 1 4 1 4 2 4 4 1 1 4 1 3 2 3 3 + 1 3 1 3 2 3 3 1 2 1 3 1 + 3 3 1 2 1 4 1 1 4 4 1 2 1 4 1 4 1

C Melodic Minor

4 0 1 4 1 4 2 4 4 1 1 4 1 3 2 3 3 + 1 3 1 3 2 3 3 1 2 1 3 1 + 3 3 1 2 1 4 1 1 4 4 1 2 1 4 1 0 4

C# Melodic Minor

4 1 1 4 1 4 2 4 4 1 1 4 1 3 2 3 3 + 1 3 1 3 2 3 3 1 2 1 3 1 + 3 3 1 2 1 4 1 1 4 4 1 2 1 4 1 1 4

D Melodic Minor

0 1 2 0 1 4 2 4 4 2 4 + 1 3 2 3 3 + 1 3 1 3 2 3 3 1 2 1 3 1 + 3 3 1 2 1 + 4 2 4 4 1 2 1 0 2 1 0

D# Melodic Minor

1 4 1 4 1 4 2 4 4 2 4 + 1 3 2 3 3 + 1 3 1 3 2 3 3 1 2 1 3 1 + 3 3 1 2 1 + 4 2 4 4 1 2 1 4 1 4 1

Eb Melodic Minor

1 4 1 4 1 4 2 4 4 2 4 + 1 3 2 3 3 + 1 3 1 3 2 3 3 1 2 1 3 1 + 3 3 1 2 1 + 4 2 4 4 1 2 1 4 1 4 1

Major Arpeggios

The image displays eight rows of musical notation for major arpeggios in bass clef, 3/4 time. Each row corresponds to a specific major chord and includes a sequence of notes with fingerings and a repeat sign at the end. The chords and their corresponding note sequences are:

- B Major:** B, E, A, D, G, D, A, E, B. Fingerings: 0, 4, 1, 2, 1, 4, 4, +, 3, 3, 3, +, 4, 4, 1, 2, 1, 4.
- Cb Major:** B, E, A, D, G, D, A, E, B. Fingerings: 0, 4, 1, 2, 1, 4, 4, +, 3, 3, 3, +, 4, 4, 1, 2, 1, 4.
- C Major:** B, E, A, D, G, D, A, E, B. Fingerings: 1, 0, 4, 2, 1, 4, 4, +, 3, 3, 3, +, 4, 4, 1, 2, 4, 0.
- C# Major:** B, E, A, D, G, D, A, E, B. Fingerings: 2, 1, 4, 2, 1, 4, 4, +, 3, 3, 3, +, 4, 4, 1, 2, 4, 1.
- Db Major:** B, E, A, D, G, D, A, E, B. Fingerings: 2, 1, 4, 2, 1, 4, 4, +, 3, 3, 3, +, 4, 4, 1, 2, 4, 1.
- D Major:** B, E, A, D, G, D, A, E, B. Fingerings: 2, 1, 4, 2, 1, 3, 3, +, 3, 3, 3, +, 3, 3, 1, 2, 4, 1.
- Eb Major:** B, E, A, D, G, D, A, E, B. Fingerings: 4, 2, 4, 2, 1, 3, 3, +, 3, 3, 3, +, 3, 3, 1, 2, 4, 2.
- E Major:** E, A, D, G, D, A, E. Fingerings: 0, 4, 1, 2, 1, 4, 4, +, 3, 3, 3, +, 4, 4, 1, 2, 1, 4.

Major Arpeggios

F Major

Musical notation for F Major arpeggio in 3/4 time. The piece starts in the bass clef with a key signature of one flat (Bb). The first measure contains notes E (1), A (0), and D (4). The second measure contains notes A (4), D (2), and G (1). The third measure contains notes D (4), G (4), and F (3). The fourth measure contains notes G (3), F (3), and E (3). The fifth measure contains notes F (4), D (4), and A (1). The sixth measure contains notes A (2), D (4), and F (0). The piece concludes with a final E (1) note. Fingering numbers are provided below the notes.

F# Major

Musical notation for F# Major arpeggio in 3/4 time. The piece starts in the bass clef with a key signature of three sharps (F#, C#, G#). The first measure contains notes E (2), A (1), and D (4). The second measure contains notes A (2), D (1), and G (4). The third measure contains notes D (4), G (4), and F# (3). The fourth measure contains notes G (3), F# (3), and E (3). The fifth measure contains notes F# (4), D (4), and A (1). The sixth measure contains notes A (2), D (4), and F# (1). The piece concludes with a final E (2) note. Fingering numbers are provided below the notes.

Gb Major

Musical notation for Gb Major arpeggio in 3/4 time. The piece starts in the bass clef with a key signature of two flats (Bb, Eb). The first measure contains notes E (2), A (1), and D (4). The second measure contains notes A (2), D (1), and Gb (4). The third measure contains notes D (4), Gb (4), and F (3). The fourth measure contains notes Gb (3), F (3), and E (3). The fifth measure contains notes F (4), D (4), and A (1). The sixth measure contains notes A (2), D (4), and F (1). The piece concludes with a final E (2) note. Fingering numbers are provided below the notes.

G Major

Musical notation for G Major arpeggio in 3/4 time. The piece starts in the bass clef with a key signature of one sharp (F#). The first measure contains notes E (2), A (1), and D (4). The second measure contains notes A (2), D (1), and G (3). The third measure contains notes D (3), G (3), and F# (3). The fourth measure contains notes G (3), F# (3), and E (3). The fifth measure contains notes F# (3), D (3), and A (1). The sixth measure contains notes A (2), D (4), and G (1). The piece concludes with a final E (2) note. Fingering numbers are provided below the notes.

Ab Major

Musical notation for Ab Major arpeggio in 3/4 time. The piece starts in the bass clef with a key signature of three flats (Bb, Eb, Ab). The first measure contains notes E (4), A (2), and D (4). The second measure contains notes A (2), D (1), and G (3). The third measure contains notes D (3), G (3), and F (3). The fourth measure contains notes G (3), F (3), and E (3). The fifth measure contains notes F (3), D (3), and A (1). The sixth measure contains notes A (2), D (4), and F (2). The piece concludes with a final E (4) note. Fingering numbers are provided below the notes.

A Major

Musical notation for A Major arpeggio in 3/4 time. The piece starts in the bass clef with a key signature of two sharps (F#, C#). The first measure contains notes A (0), E (4), and D (1). The second measure contains notes E (4), D (2), and G (1). The third measure contains notes D (4), G (1), and F# (4). The fourth measure contains notes G (3), F# (3), and E (3). The fifth measure contains notes F# (3), D (3), and A (1). The sixth measure contains notes A (4), D (2), and E (1). The piece concludes with a final A (0) note. Fingering numbers are provided below the notes.

Bb Major

Musical notation for Bb Major arpeggio in 3/4 time. The piece starts in the bass clef with a key signature of two flats (Bb, Eb). The first measure contains notes A (1), D (0), and G (4). The second measure contains notes D (2), G (1), and F (4). The third measure contains notes G (3), F (3), and E (3). The fourth measure contains notes F (3), E (3), and D (3). The fifth measure contains notes E (3), D (3), and Bb (1). The sixth measure contains notes Bb (2), D (4), and A (0). The piece concludes with a final A (1) note. Fingering numbers are provided below the notes.

Major Arpeggios

B Major

Musical notation for B Major arpeggio in 3/4 time. The piece is written in a grand staff with a bass clef on the left and a treble clef on the right. The key signature has two sharps (F# and C#). The melody starts on E4 in the bass clef, moves to A4, then D5, and ends on E4. The bass line starts on G3, moves to F3, E3, D3, C3, and ends on G3. Fingering numbers (2, 1, 4, 4, +, 3, 3, +, 3, 3, 3, +, 3, 3, +, 4, 4, 1, 2) are placed below the notes. Chord symbols E, A, D, G, D, A, E are placed above the notes. A repeat sign is at the end.

Cb Major

Musical notation for Cb Major arpeggio in 3/4 time. The piece is written in a grand staff with a bass clef on the left and a treble clef on the right. The key signature has seven flats (Bb, Eb, Ab, Db, Gb, Cb, Fb). The melody starts on E4 in the bass clef, moves to A4, then D5, and ends on E4. The bass line starts on G3, moves to F3, E3, D3, C3, and ends on G3. Fingering numbers (2, 1, 4, 4, +, 3, 3, +, 3, 3, 3, +, 3, 3, +, 4, 4, 1, 2) are placed below the notes. Chord symbols E, A, D, G, D, A, E are placed above the notes. A repeat sign is at the end.

C Major

Musical notation for C Major arpeggio in 3/4 time. The piece is written in a grand staff with a bass clef on the left and a treble clef on the right. The key signature has no sharps or flats. The melody starts on E4 in the bass clef, moves to A4, then D5, and ends on E4. The bass line starts on G3, moves to F3, E3, D3, C3, and ends on G3. Fingering numbers (2, 1, 4, 4, +, 3, 3, +, 3, 3, 3, +, 3, 3, +, 4, 4, 1, 2) are placed below the notes. Chord symbols E, A, E, G, D, A, E are placed above the notes. A repeat sign is at the end.

C# Major

Musical notation for C# Major arpeggio in 3/4 time. The piece is written in a grand staff with a bass clef on the left and a treble clef on the right. The key signature has three sharps (F#, C#, G#). The melody starts on E4 in the bass clef, moves to A4, then D5, and ends on E4. The bass line starts on G3, moves to F3, E3, D3, C3, and ends on G3. Fingering numbers (2, 1, 4, 4, +, 3, 3, +, 3, 3, 3, +, 3, 3, +, 4, 4, 1, 2) are placed below the notes. Chord symbols E, A, D, G, D, A, E are placed above the notes. A repeat sign is at the end.

Db Major

Musical notation for Db Major arpeggio in 3/4 time. The piece is written in a grand staff with a bass clef on the left and a treble clef on the right. The key signature has five flats (Bb, Eb, Ab, Db, Gb). The melody starts on E4 in the bass clef, moves to A4, then D5, and ends on E4. The bass line starts on G3, moves to F3, E3, D3, C3, and ends on G3. Fingering numbers (2, 1, 4, 4, +, 3, 3, +, 3, 3, 3, +, 3, 3, +, 4, 4, 1, 2) are placed below the notes. Chord symbols E, A, D, G, D, A, E are placed above the notes. A repeat sign is at the end.

D Major

Musical notation for D Major arpeggio in 3/4 time. The piece is written in a grand staff with a bass clef on the left and a treble clef on the right. The key signature has two sharps (F# and C#). The melody starts on E4 in the bass clef, moves to A4, then D5, and ends on E4. The bass line starts on G3, moves to F3, E3, D3, C3, and ends on G3. Fingering numbers (2, 1, 3, 3, +, 3, 3, +, 3, 3, 3, +, 3, 3, +, 3, 3, 1, 2) are placed below the notes. Chord symbols E, A, D, G, D, A, E are placed above the notes. A repeat sign is at the end.

Eb Major

Musical notation for Eb Major arpeggio in 3/4 time. The piece is written in a grand staff with a bass clef on the left and a treble clef on the right. The key signature has three flats (Bb, Eb, Ab). The melody starts on E4 in the bass clef, moves to A4, then D5, and ends on E4. The bass line starts on G3, moves to F3, E3, D3, C3, and ends on G3. Fingering numbers (2, 1, 3, 3, +, 3, 3, +, 3, 3, 3, +, 3, 3, +, 3, 3, 1, 2) are placed below the notes. Chord symbols E, A, D, G, D, A, E are placed above the notes. A repeat sign is at the end.

Minor Arpeggios

B Minor

B E A D G D A E B

C Minor

B E A D G D A E B

C# Minor

B E A D G D A E B

D Minor

B E A D G D A E B

D# Minor

B E A D G D A E B

Eb Minor

B E A D G D A E B

E Minor

E A D G D A E

Minor Arpeggios

F Minor

Musical notation for F Minor arpeggio in 3/4 time. The piece starts with a treble clef and a key signature of two flats (Bb, Eb). The first measure contains a whole note chord E (E2, G2, Bb2). The second measure contains a whole note chord A (A2, C3, Eb3). The third measure contains a whole note chord D (D2, F3, Ab3). The fourth measure contains a whole note chord G (G2, Bb2, D3). The fifth measure contains a whole note chord F (F2, Ab2, C3). The sixth measure contains a whole note chord Eb (Eb2, G2, Bb2). The seventh measure contains a whole note chord D (D2, F3, Ab3). The eighth measure contains a whole note chord A (A2, C3, Eb3). The ninth measure contains a whole note chord E (E2, G2, Bb2). The tenth measure contains a whole note chord F (F2, Ab2, C3). The eleventh measure contains a whole note chord Eb (Eb2, G2, Bb2). The twelfth measure contains a whole note chord D (D2, F3, Ab3). The thirteenth measure contains a whole note chord A (A2, C3, Eb3). The fourteenth measure contains a whole note chord E (E2, G2, Bb2). The piece ends with a double bar line and a repeat sign.

F# Minor

Musical notation for F# Minor arpeggio in 3/4 time. The piece starts with a treble clef and a key signature of one sharp (F#). The first measure contains a whole note chord E (E2, G2, B2). The second measure contains a whole note chord A (A2, C3, E3). The third measure contains a whole note chord D (D2, F#3, A3). The fourth measure contains a whole note chord G (G2, B2, D3). The fifth measure contains a whole note chord F# (F#2, A2, C3). The sixth measure contains a whole note chord E (E2, G2, B2). The seventh measure contains a whole note chord D (D2, F#3, A3). The eighth measure contains a whole note chord A (A2, C3, E3). The ninth measure contains a whole note chord E (E2, G2, B2). The piece ends with a double bar line and a repeat sign.

G Minor

Musical notation for G Minor arpeggio in 3/4 time. The piece starts with a treble clef and a key signature of one flat (Bb). The first measure contains a whole note chord E (E2, G2, Bb2). The second measure contains a whole note chord A (A2, C3, Eb3). The third measure contains a whole note chord D (D2, F3, Ab3). The fourth measure contains a whole note chord A (A2, C3, Eb3). The fifth measure contains a whole note chord D (D2, F3, Ab3). The sixth measure contains a whole note chord G (G2, Bb2, D3). The seventh measure contains a whole note chord F (F2, Ab2, C3). The eighth measure contains a whole note chord Eb (Eb2, G2, Bb2). The ninth measure contains a whole note chord D (D2, F3, Ab3). The tenth measure contains a whole note chord A (A2, C3, Eb3). The eleventh measure contains a whole note chord D (D2, F3, Ab3). The twelfth measure contains a whole note chord A (A2, C3, Eb3). The thirteenth measure contains a whole note chord D (D2, F3, Ab3). The piece ends with a double bar line and a repeat sign.

G# Minor

Musical notation for G# Minor arpeggio in 3/4 time. The piece starts with a treble clef and a key signature of two sharps (F#, C#). The first measure contains a whole note chord E (E2, G2, B2). The second measure contains a whole note chord A (A2, C#3, E3). The third measure contains a whole note chord D (D2, F#3, A3). The fourth measure contains a whole note chord G (G2, B2, D3). The fifth measure contains a whole note chord F# (F#2, A2, C#3). The sixth measure contains a whole note chord E (E2, G2, B2). The seventh measure contains a whole note chord D (D2, F#3, A3). The eighth measure contains a whole note chord A (A2, C#3, E3). The ninth measure contains a whole note chord E (E2, G2, B2). The piece ends with a double bar line and a repeat sign.

Ab Minor

Musical notation for Ab Minor arpeggio in 3/4 time. The piece starts with a treble clef and a key signature of three flats (Bb, Eb, Ab). The first measure contains a whole note chord E (E2, G2, Bb2). The second measure contains a whole note chord A (A2, C3, Eb3). The third measure contains a whole note chord D (D2, F3, Ab3). The fourth measure contains a whole note chord G (G2, Bb2, D3). The fifth measure contains a whole note chord F (F2, Ab2, C3). The sixth measure contains a whole note chord Eb (Eb2, G2, Bb2). The seventh measure contains a whole note chord D (D2, F3, Ab3). The eighth measure contains a whole note chord A (A2, C3, Eb3). The ninth measure contains a whole note chord E (E2, G2, Bb2). The piece ends with a double bar line and a repeat sign.

A Minor

Musical notation for A Minor arpeggio in 3/4 time. The piece starts with a treble clef and a key signature of no sharps or flats. The first measure contains a whole note chord A (A2, C3, E3). The second measure contains a whole note chord D (D2, F3, A3). The third measure contains a whole note chord G (G2, B2, D3). The fourth measure contains a whole note chord F (F2, Ab2, C3). The fifth measure contains a whole note chord E (E2, G2, B2). The sixth measure contains a whole note chord D (D2, F3, A3). The seventh measure contains a whole note chord A (A2, C3, E3). The eighth measure contains a whole note chord D (D2, F3, A3). The ninth measure contains a whole note chord A (A2, C3, E3). The piece ends with a double bar line and a repeat sign.

A# Minor

Musical notation for A# Minor arpeggio in 3/4 time. The piece starts with a treble clef and a key signature of three sharps (F#, C#, G#). The first measure contains a whole note chord A (A2, C#3, E3). The second measure contains a whole note chord D (D2, F#3, A3). The third measure contains a whole note chord G (G2, B2, D3). The fourth measure contains a whole note chord F# (F#2, A2, C#3). The fifth measure contains a whole note chord E (E2, G2, B2). The sixth measure contains a whole note chord D (D2, F#3, A3). The seventh measure contains a whole note chord A (A2, C#3, E3). The eighth measure contains a whole note chord D (D2, F#3, A3). The ninth measure contains a whole note chord A (A2, C#3, E3). The piece ends with a double bar line and a repeat sign.

Minor Arpeggios

Bb Minor

1 4 2 4 1 4 + 3 + 3 + 3 + 4 1 4 2 4 1

B Minor

4 1 4 4 + 3 3 + 3 3 3 + 3 3 + 4 4 1 4

C Minor

4 1 4 4 + 3 3 + 3 3 3 + 3 3 + 4 4 1 4

C# Minor

4 1 4 4 + 3 3 + 3 3 3 + 3 3 + 4 4 1 4

D Minor

4 1 3 3 + 3 3 + 3 3 3 + 3 3 + 3 3 1 4

D# Minor

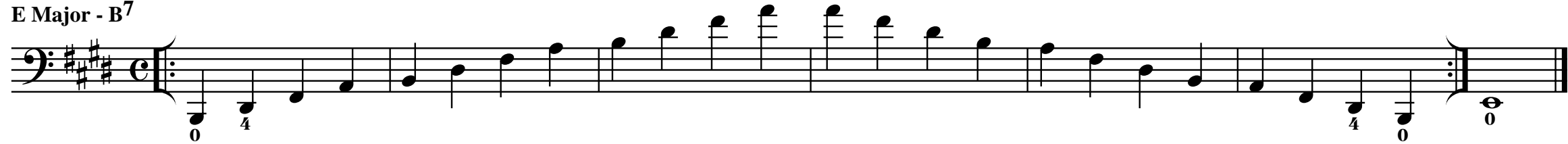
4 1 3 3 + 3 3 + 3 3 3 + 3 3 + 3 3 1 4

Eb Minor

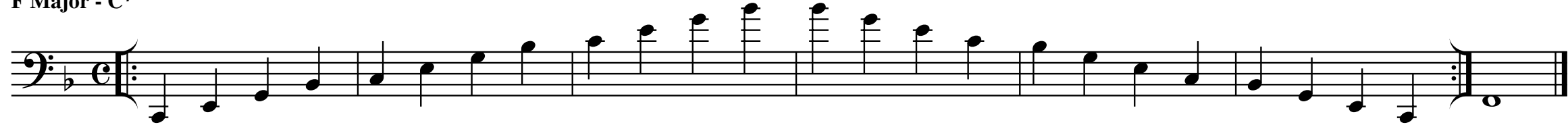
4 1 3 3 + 3 3 + 3 3 3 + 3 3 + 3 3 1 4

Dominant 7th Arpeggios

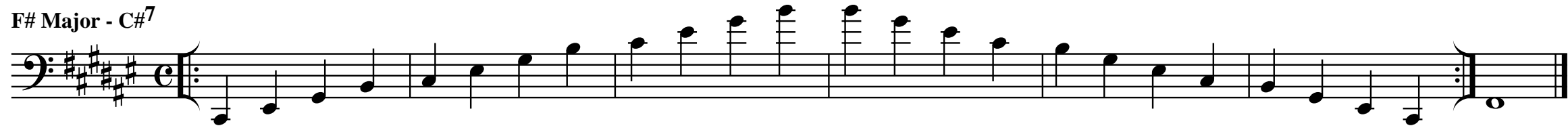
E Major - B⁷



F Major - C⁷



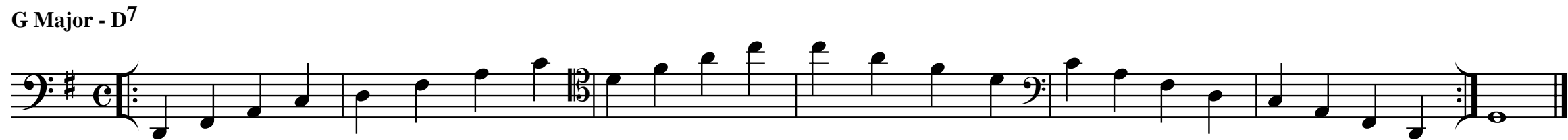
F# Major - C#⁷



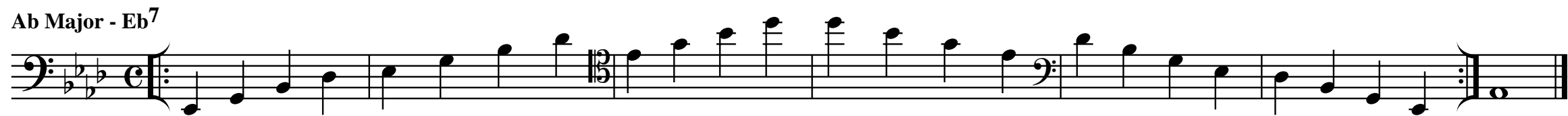
Gb Major - Db⁷



G Major - D⁷



Ab Major - Eb⁷



A Major - E⁷

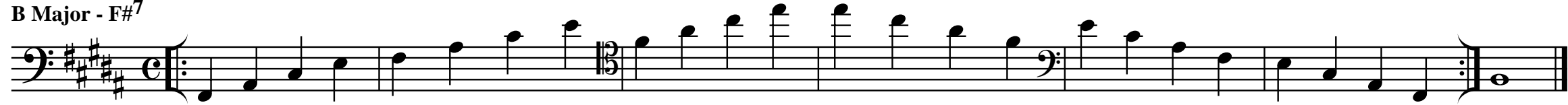


Dominant 7th Arpeggios

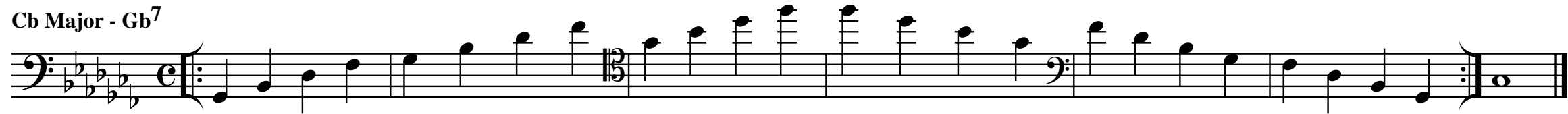
Bb Major - F⁷



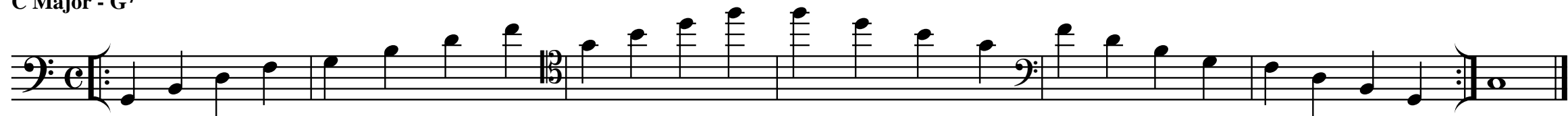
B Major - F#⁷



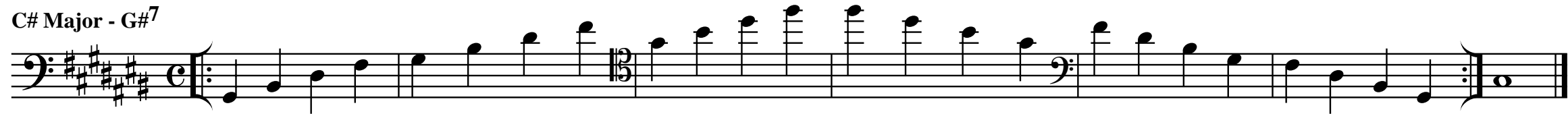
Cb Major - Gb⁷



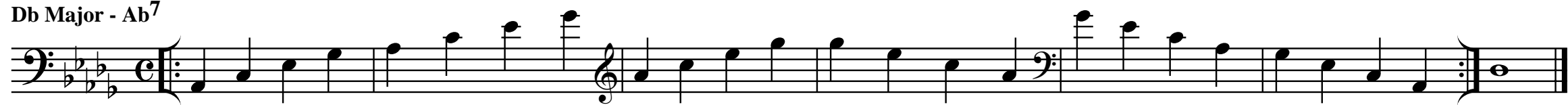
C Major - G⁷



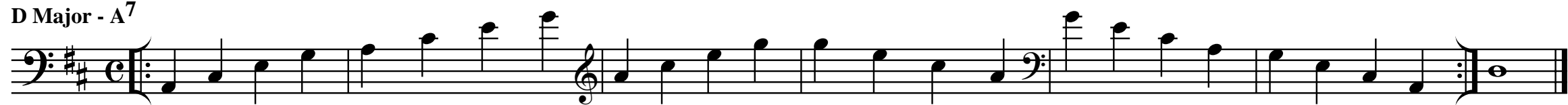
C# Major - G#⁷



Db Major - Ab⁷



D Major - A⁷



Dominant 7th Arpeggios

Eb Major - Bb⁷

Musical notation for Eb Major - Bb⁷ arpeggio. The piece is in Eb major (three flats) and common time. It features a sequence of eighth notes in the bass clef: Eb, F, G, Ab, Bb, C, D, Eb. This is followed by a sequence of eighth notes in the treble clef: Eb, F, G, Ab, Bb, C, D, Eb. The piece concludes with a final Eb note in the bass clef.

E Major - B⁷

Musical notation for E Major - B⁷ arpeggio. The piece is in E major (four sharps) and common time. It features a sequence of eighth notes in the bass clef: E, F#, G, A, B, C#, D, E. This is followed by a sequence of eighth notes in the treble clef: E, F#, G, A, B, C#, D, E. The piece concludes with a final E note in the bass clef.

F Major - C⁷

Musical notation for F Major - C⁷ arpeggio. The piece is in F major (two flats) and common time. It features a sequence of eighth notes in the bass clef: F, G, A, Bb, C, D, Eb, F. This is followed by a sequence of eighth notes in the treble clef: F, G, A, Bb, C, D, Eb, F. The piece concludes with a final F note in the bass clef.

F# Major - C#⁷

Musical notation for F# Major - C#⁷ arpeggio. The piece is in F# major (six sharps) and common time. It features a sequence of eighth notes in the bass clef: F#, G#, A, B, C#, D#, E, F#. This is followed by a sequence of eighth notes in the treble clef: F#, G#, A, B, C#, D#, E, F#. The piece concludes with a final F# note in the bass clef.

Gb Major

Musical notation for Gb Major arpeggio. The piece is in Gb major (five flats) and common time. It features a sequence of eighth notes in the bass clef: Gb, Ab, Bb, C, D, Eb, F, Gb. This is followed by a sequence of eighth notes in the treble clef: Gb, Ab, Bb, C, D, Eb, F, Gb. The piece concludes with a final Gb note in the bass clef.

G Major - D⁷

Musical notation for G Major - D⁷ arpeggio. The piece is in G major (one sharp) and common time. It features a sequence of eighth notes in the bass clef: G, A, B, C, D, E, F#, G. This is followed by a sequence of eighth notes in the treble clef: G, A, B, C, D, E, F#, G. The piece concludes with a final G note in the bass clef.

Ab Major - Eb⁷

Musical notation for Ab Major - Eb⁷ arpeggio. The piece is in Ab major (four flats) and common time. It features a sequence of eighth notes in the bass clef: Ab, Bb, C, D, Eb, F, G, Ab. This is followed by a sequence of eighth notes in the treble clef: Ab, Bb, C, D, Eb, F, G, Ab. The piece concludes with a final Ab note in the bass clef.

Diminished 7th Arpeggios

C Minor - B^{dim}7

Musical notation for C Minor - B^{dim}7 arpeggio. The notation is in bass clef with a key signature of two flats (Bb, Eb). The arpeggio consists of the notes Bb, Eb, Gb, and Ab. The sequence is shown as a single eighth note followed by three beamed eighth notes, then a dotted quarter note, and finally a half note. The sequence is repeated twice across the staff.

C# Minor - B^{dim}7

Musical notation for C# Minor - B^{dim}7 arpeggio. The notation is in bass clef with a key signature of three sharps (F#, C#, G#). The arpeggio consists of the notes B, Eb, G, and Ab. The sequence is shown as a single eighth note followed by three beamed eighth notes, then a dotted quarter note, and finally a half note. The sequence is repeated twice across the staff.

D Minor - C^{dim}7

Musical notation for D Minor - C^{dim}7 arpeggio. The notation is in bass clef with a key signature of one flat (Bb). The arpeggio consists of the notes C, Eb, F, and Gb. The sequence is shown as a single eighth note followed by three beamed eighth notes, then a dotted quarter note, and finally a half note. The sequence is repeated twice across the staff.

D# Minor - C^{dim}7

Musical notation for D# Minor - C^{dim}7 arpeggio. The notation is in bass clef with a key signature of three sharps (F#, C#, G#). The arpeggio consists of the notes C, Eb, F, and Gb. The sequence is shown as a single eighth note followed by three beamed eighth notes, then a dotted quarter note, and finally a half note. The sequence is repeated twice across the staff.

Eb Minor - D^{dim}7

Musical notation for Eb Minor - D^{dim}7 arpeggio. The notation is in bass clef with a key signature of three flats (Bbb, Ebb, Abb). The arpeggio consists of the notes D, F, Ab, and Bb. The sequence is shown as a single eighth note followed by three beamed eighth notes, then a dotted quarter note, and finally a half note. The sequence is repeated twice across the staff.

E Minor - D^{dim}7

Musical notation for E Minor - D^{dim}7 arpeggio. The notation is in bass clef with a key signature of one sharp (F#). The arpeggio consists of the notes D, F, Ab, and Bb. The sequence is shown as a single eighth note followed by three beamed eighth notes, then a dotted quarter note, and finally a half note. The sequence is repeated twice across the staff.

F Minor - E^{dim}7

Musical notation for F Minor - E^{dim}7 arpeggio. The notation is in bass clef with a key signature of two flats (Bb, Eb). The arpeggio consists of the notes E, G, Ab, and Bb. The sequence is shown as a single eighth note followed by three beamed eighth notes, then a dotted quarter note, and finally a half note. The sequence is repeated twice across the staff.

Diminished 7th Arpeggios

F# Minor - E#dim7

Musical notation for F# Minor - E#dim7 arpeggio. The notation is in bass clef with a key signature of two sharps (F# and C#). It consists of two measures: the first measure contains the notes E# (F#), G#, A, B, C# (D), and the second measure contains the notes D, E, F#, G#, A, B. The notes are beamed together and played in a descending sequence.

G Minor - F#dim7

Musical notation for G Minor - F#dim7 arpeggio. The notation is in bass clef with a key signature of one flat (F). It consists of two measures: the first measure contains the notes F#, G, A, B, C, and the second measure contains the notes D, E, F, G, A, B. The notes are beamed together and played in a descending sequence.

G# Minor - Fxdim7

Musical notation for G# Minor - Fxdim7 arpeggio. The notation is in bass clef with a key signature of three sharps (F#, C#, G#). It consists of two measures: the first measure contains the notes Fx (F#), G#, A, B, Cx (C#), and the second measure contains the notes D, E, Fx, G#, A, B. The notes are beamed together and played in a descending sequence.

Ab Minor - Gdim7

Musical notation for Ab Minor - Gdim7 arpeggio. The notation is in bass clef with a key signature of four flats (Bb, Eb, Ab, Db). It consists of two measures: the first measure contains the notes G, Ab, Bb, C, D, and the second measure contains the notes Eb, F, G, Ab, Bb, C. The notes are beamed together and played in a descending sequence.

A Minor - G#dim7

Musical notation for A Minor - G#dim7 arpeggio. The notation is in bass clef with a key signature of no sharps or flats. It consists of two measures: the first measure contains the notes G#, A, B, C, D, and the second measure contains the notes E, F, G, A, B, C. The notes are beamed together and played in a descending sequence.

A# Minor - Gxdim7

Musical notation for A# Minor - Gxdim7 arpeggio. The notation is in bass clef with a key signature of three sharps (F#, C#, G#). It consists of two measures: the first measure contains the notes Gx (G#), A#, B, C, D, and the second measure contains the notes E, Fx (F#), Gx, A#, B, C. The notes are beamed together and played in a descending sequence.

Bb Minor - A dim7

Musical notation for Bb Minor - A dim7 arpeggio. The notation is in bass clef with a key signature of two flats (Bb, Eb). It consists of two measures: the first measure contains the notes A, Bb, C, D, Eb, and the second measure contains the notes F, G, Ab, Bb, C, D. The notes are beamed together and played in a descending sequence.

Diminished 7th Arpeggios

B Minor - A[#]dim7

Musical notation for B Minor - A[#]dim7 arpeggio. The piece is in 4/4 time. The bass line starts on B2 and ascends to A#3, then descends to B1. The treble line starts on A#3 and descends to B1. The notation includes repeat signs and a final whole note chord.

C Minor - Bdim7

Musical notation for C Minor - Bdim7 arpeggio. The piece is in 4/4 time. The bass line starts on C3 and ascends to B3, then descends to C1. The treble line starts on B3 and descends to C1. The notation includes repeat signs and a final whole note chord.

C# Minor - B#dim7

Musical notation for C# Minor - B#dim7 arpeggio. The piece is in 4/4 time. The bass line starts on C#3 and ascends to B#3, then descends to C#1. The treble line starts on B#3 and descends to C#1. The notation includes repeat signs and a final whole note chord.

D Minor - C#dim7

Musical notation for D Minor - C#dim7 arpeggio. The piece is in 4/4 time. The bass line starts on D3 and ascends to C#4, then descends to D1. The treble line starts on C#4 and descends to D1. The notation includes repeat signs and a final whole note chord.

D# Minor - Cxdim7

Musical notation for D# Minor - Cxdim7 arpeggio. The piece is in 4/4 time. The bass line starts on D#3 and ascends to C#4, then descends to D#1. The treble line starts on C#4 and descends to D#1. The notation includes repeat signs and a final whole note chord. Some notes are marked with an 'x' to indicate they are not played.

Eb Minor - Ddim7

Musical notation for Eb Minor - Ddim7 arpeggio. The piece is in 4/4 time. The bass line starts on Eb3 and ascends to D4, then descends to Eb1. The treble line starts on D4 and descends to Eb1. The notation includes repeat signs and a final whole note chord.



All Scales & Arpeggios

B Major

Two systems of musical notation for the B Major scale and arpeggios. The first system shows the ascending and descending scales in treble and bass clefs with fingering and triplet markings. The second system shows the B Major arpeggios in treble and bass clefs with fingering.

B Harmonic Minor

Two systems of musical notation for the B Harmonic Minor scale and arpeggios. The first system shows the ascending and descending scales in treble and bass clefs with fingering and triplet markings. The second system shows the B Harmonic Minor arpeggios in treble and bass clefs with fingering.

B Melodic Minor

Two systems of musical notation for the B Melodic Minor scale and arpeggios. The first system shows the ascending and descending scales in treble and bass clefs with fingering and triplet markings. The second system shows the B Melodic Minor arpeggios in treble and bass clefs with fingering.

B Minor

Two systems of musical notation for the B Minor scale and arpeggios. The first system shows the ascending and descending scales in treble and bass clefs with fingering and triplet markings. The second system shows the B Minor arpeggios in treble and bass clefs with fingering.

Cb Major

Two systems of musical notation for the Cb Major scale and arpeggios. The first system shows the ascending and descending scales in treble and bass clefs with fingering and triplet markings. The second system shows the Cb Major arpeggios in treble and bass clefs with fingering.

All Scales & Arpeggios

C Major

Two systems of musical notation for the C Major scale and arpeggios in bass clef. The first system shows the scale in 4/4 time, with notes B, E, A, D, G, and B. The second system shows the arpeggios in 3/4 time, with notes B, E, A, D, G, and B. Fingerings and technical markings like triplets and slurs are included.

C Harmonic Minor

Two systems of musical notation for the C Harmonic Minor scale and arpeggios in bass clef. The first system shows the scale in 4/4 time, with notes B, E, A, D, G, and B. The second system shows the arpeggios in 3/4 time, with notes B, E, A, D, G, and B. Fingerings and technical markings are included.

C Melodic Minor

Two systems of musical notation for the C Melodic Minor scale and arpeggios in bass clef. The first system shows the scale in 4/4 time, with notes B, E, A, D, G, and B. The second system shows the arpeggios in 3/4 time, with notes B, E, A, D, G, and B. Fingerings and technical markings are included.

C Minor

Two systems of musical notation for the C Minor scale and arpeggios in bass clef. The first system shows the scale in 4/4 time, with notes B, E, A, D, G, and B. The second system shows the arpeggios in 3/4 time, with notes B, E, A, D, G, and B. Fingerings and technical markings are included.

C# Major

Two systems of musical notation for the C# Major scale and arpeggios in bass clef. The first system shows the scale in 4/4 time, with notes B, E, A, D, G, and B. The second system shows the arpeggios in 3/4 time, with notes B, E, A, D, G, and B. Fingerings and technical markings are included.

All Scales & Arpeggios

C# Harmonic Minor

1 4 1 4 1 2 2 4 1 1 4 1 2 2 4 1 1 4 1 2 2 3 + 1 3 1 2 2 3 2 2 1 3 1 + 3 2 2 1 4 1 1 4 2 2 1 4 1 1 4 2 2 1 4 1 4

C# Melodic Minor

1 4 1 4 1 4 2 4 1 1 4 1 4 2 4 1 1 4 1 3 2 3 + 1 3 1 3 2 3 1 2 1 3 1 + 3 1 2 1 4 1 1 4 1 2 1 4 1 1 4 1 2 1 4 1 4

C# Minor

1 0 4 4 1 4 4 + 3 3 + 3 3 3 + 3 3 3 + 4 4 1 4 4 0

Db Major

1 4 2 4 1 4 2 4 1 2 4 1 4 2 4 1 4 1 3 + 2 3 1 3 1 3 1 2 3 2 1 3 1 3 1 3 2 + 3 1 4 1 4 2 4 1 4 2 1 4 2 4 2 4

D Major

2 1 4 2 1 4 4 + 3 3 + 3 3 3 + 3 3 3 + 4 4 1 2 4 1

D Major

2 0 1 2 0 1 2 4 1 2 4 1 4 2 4 1 4 1 3 + 2 3 1 3 1 3 1 2 3 2 1 3 1 3 1 3 2 + 3 1 4 1 4 2 4 1 4 2 1 0 2 1 0

D Major

2 1 4 2 1 3 3 + 3 3 + 3 3 3 + 3 3 3 + 3 3 1 2 4 1

All Scales & Arpeggios

D Harmonic Minor

Musical notation for the D Harmonic Minor scale. The scale is shown in both bass and treble clefs. The bass clef part starts with a B note (finger 4) and an E note (finger 1), followed by a sequence of notes with fingerings: 4, 0, 1, 4, 2, 4, 2, 4, 1, 1, 4, 1, 2, 2. The treble clef part starts with a G note (finger 3), followed by a sequence of notes with fingerings: 3, 1, 1, 3, 1, 2, 2, 3, +, 1, 3, 1, 2, 2, 3, 2, 2, 1, 3, 1, +, 3, 2, 2, 1, 3, 1, 1. The scale is then shown in a descending sequence with fingerings: 3, 2, 2, 1, 3, 1, +, 3, 2, 2, 1, 4, 1, 1, 4, 2, 4, 2, 4, 1, 0.

D Melodic Minor

Musical notation for the D Melodic Minor scale. The scale is shown in both bass and treble clefs. The bass clef part starts with a B note (finger 4) and an E note (finger 1), followed by a sequence of notes with fingerings: 4, 0, 1, 4, 1, 4, 2, 4, 1, 1, 4, 1, 4, 2. The treble clef part starts with a G note (finger 3), followed by a sequence of notes with fingerings: 3, 1, 1, 3, 1, 3, 2, 3, +, 1, 3, 1, 3, 2, 3, 1, 2, 1, 3, +, 3, 1, 2, 1, 3, 1, 1, 2, 1, 3, 1, 1. The scale is then shown in a descending sequence with fingerings: 3, 1, 2, 1, 3, +, 3, 1, 2, 1, 3, 1, 1, 3, 1, 2, 1, 4, 1, 1, 4, 1, 2, 1, 4, 1, 0.

D Minor

Musical notation for the D Minor scale. The scale is shown in both bass and treble clefs. The bass clef part starts with a B note (finger 4) and an E note (finger 1), followed by a sequence of notes with fingerings: 4, 1, 4, 4, 1, 3. The treble clef part starts with a D note (finger 3), followed by a sequence of notes with fingerings: 3, +, 3, 3, +, 3, 3, 3, +, 3, 3, 3, +. The scale is then shown in a descending sequence with fingerings: 3, 3, 1, 4, 4, 1.

D# Harmonic Minor

Musical notation for the D# Harmonic Minor scale. The scale is shown in both bass and treble clefs. The bass clef part starts with a B note (finger 4) and an E note (finger 1), followed by a sequence of notes with fingerings: 4, 1, 1, 4, 1, 2, 2, 4, 1, 1, 4, 1, 2, 2. The treble clef part starts with a G note (finger 3), followed by a sequence of notes with fingerings: 4, 2, 4, +, 1, 2, 2, 3, +, 1, 3, 1, 2, 2, 3, 2, 2, 1, 3, 1, +, 3, 2, 2, 1, 3, 1, +, 3, 2, 2, 1, 3, 1, 1, 2, 1, 3, 1, 1. The scale is then shown in a descending sequence with fingerings: 4, 2, 2, 1, 4, 1, 1, 4, 2, 2, 1, 4, 1, 1, 4, 2, 2, 1, 4, 1, 1.

D# Melodic Minor

Musical notation for the D# Melodic Minor scale. The scale is shown in both bass and treble clefs. The bass clef part starts with a B note (finger 4) and an E note (finger 1), followed by a sequence of notes with fingerings: 4, 1, 1, 4, 1, 4, 2, 4, 1, 1, 4, 1, 4, 2. The treble clef part starts with a G note (finger 3), followed by a sequence of notes with fingerings: 4, 2, 4, +, 1, 3, 2, 3, +, 1, 3, 1, 3, 2, 3, 1, 2, 1, 3, 1, +, 3, 1, 2, 1, 3, 1, +, 3, 1, 2, 1, 3, 1, 1, 2, 1, 3, 1, 1. The scale is then shown in a descending sequence with fingerings: 4, 1, 2, 1, 4, 1, 1, 4, 1, 2, 1, 4, 1, 1, 4, 1, 2, 1, 4, 1, 1.

D# Minor

Musical notation for the D# Minor scale. The scale is shown in both bass and treble clefs. The bass clef part starts with a B note (finger 4) and an E note (finger 1), followed by a sequence of notes with fingerings: 4, 1, 4, 4, 1, 3. The treble clef part starts with a D note (finger 3), followed by a sequence of notes with fingerings: 3, +, 3, 3, +, 3, 3, 3, +, 3, 3, 3, +. The scale is then shown in a descending sequence with fingerings: 3, 3, 1, 4, 4, 1.

Eb Major

Musical notation for the Eb Major scale. The scale is shown in both bass and treble clefs. The bass clef part starts with a B note (finger 4) and an E note (finger 1), followed by a sequence of notes with fingerings: 4, 1, 2, 4, 1, 4, 2, 4, 1, 2, 4, 1, 4, 2. The treble clef part starts with a G note (finger 3), followed by a sequence of notes with fingerings: 4, 1, 3, 1, 3, +, 2, 3, 1, 3, 1, 3, 1, 2, 3, 2, 1, 3, 1, 3, 1, 3, 2, +, 3, 1, 3, 1, 3, 2, +, 3, 1, 3, 1, 1, 2, 1, 3, 1, 1. The scale is then shown in a descending sequence with fingerings: 4, 2, 4, 1, 4, 2, 1, 4, 2, 4, 1, 4, 2, 1, 4, 2, 4, 1, 4, 2, 1.

All Scales & Arpeggios

B E A D G D

Eb Harmonic Minor

B E A D G D

Eb Melodic Minor

B E A D G D

Eb Minor

B E A D G D

E Major

E A D G D

E A D G D

E Harmonic Minor

E A D G D

All Scales & Arpeggios

E Melodic Minor

0 1 2 0 1 4 2 4 1 1 4 1 4 2 4 2 3 + 1 3 2 3 1 2 1 + 3 2 4 1 2 1 4 1 1 4 1 2 1 0 2 1

E Minor

0 2 1 4 1 4 4 + 3 3 3 + 4 4 1 4 1 2

F Major

1 4 0 1 4 0 2 4 0 2 4 1 4 2 4 1 3 1 3 + 2 3 2 + 3 1 3 1 4 2 4 1 4 2 0 4 2 0 4 1 0 4

1 0 4 2 1 4 4 + 3 3 3 + 4 4 1 2 4 0

F Harmonic Minor

1 4 1 4 1 2 2 4 1 1 4 1 2 2 4 2 3 + 1 2 2 3 2 2 1 + 3 2 4 2 2 1 4 1 1 4 2 2 1 4 1 4

F Melodic Minor

1 4 1 4 1 4 2 4 1 1 4 1 4 2 4 2 3 + 1 3 2 3 1 2 1 + 3 2 4 1 2 1 4 1 1 4 1 2 1 4 1 4

F Minor

1 4 2 4 1 4 4 + 3 3 3 + 4 4 1 4 2 4

All Scales & Arpeggios

F# Major

1 4 2 4 1 4 2 4 1 2 4 1 4 2 4 1 3 1 3 1 2 3 2 1 3 1 3 1 4 2 4 1 4 2 1 4 2 4 1 4 2 4

2 1 4 2 1 4 4 + 3 3 3 + 4 4 1 2 4 1

F# Harmonic Minor

1 4 1 4 1 2 2 4 1 1 4 1 2 2 4 2 3 + 1 2 2 3 2 2 1 + 3 2 4 2 2 1 4 1 1 4 2 2 1 4 1 4

F# Melodic Minor

1 4 1 4 1 4 2 4 1 1 4 1 4 2 4 2 3 + 1 3 2 3 1 2 1 + 3 2 4 1 2 1 4 1 1 4 1 2 1 4 1 4

F# Minor

1 0 4 4 1 4 4 + 3 3 3 + 4 4 1 4 4 0

Gb Major

1 4 2 4 1 4 2 4 1 2 4 1 4 2 4 1 3 1 3 1 2 3 2 1 3 1 3 1 4 2 4 1 4 2 1 4 2 4 1 4 2 4

2 1 4 2 1 4 4 + 3 3 3 + 4 4 1 2 4 1

All Scales & Arpeggios

G Major

Chord diagrams: E, A, D, G, D, A

Fingering: 2 0 1 2 0 1 2 4 1 2 4 1 4 2 | 3 1 3 1 3 1 2 3 2 1 3 1 3 1 | 3 2 4 1 4 2 1 4 2 1 0 2 1 0

Fingering: 2 1 4 2 1 3 | 3 + 3 3 3 + | 3 3 1 2 4 1

G Harmonic Minor

Chord diagrams: E, A, D, G, A

Fingering: 4 0 1 4 2 4 2 4 1 1 4 1 2 2 | 3 + 1 3 1 2 2 3 2 2 1 3 1 + | 3 2 2 1 4 1 1 4 2 4 2 4 1 0

G Melodic Minor

Chord diagrams: E, A, D, G, D, A

Fingering: 4 0 1 4 1 4 2 4 1 1 4 1 4 2 | 3 + 1 3 1 3 2 3 1 2 1 3 1 + | 3 1 2 1 4 1 1 4 1 2 1 4 1 0

G Minor

Chord diagrams: E, A, D, G, D, A

Fingering: 4 1 0 4 1 3 | 3 + 3 3 3 + | 3 3 1 4 0 1

G# Harmonic Minor

Chord diagrams: E, A, D, G, D, A

Fingering: 4 1 1 4 1 2 2 4 1 1 4 1 2 2 | 3 + 1 3 1 2 2 3 2 2 1 3 1 + | 3 2 2 1 4 1 1 4 2 2 1 4 1 1

G# Melodic Minor

Chord diagrams: E, A, D, G, D, A

Fingering: 4 1 1 4 1 4 2 4 1 1 4 1 4 2 | 3 + 1 3 1 3 2 3 1 2 1 3 1 + | 3 1 2 1 4 1 1 4 1 2 1 4 1 1

All Scales & Arpeggios

G# Minor

4 1 4 4 1 3 3 + 3 3 3 + 3 3 1 4 4 1

A♭ Major

4 1 2 4 1 4 2 4 1 2 4 1 4 2 3 1 3 1 3 1 2 3 2 1 3 1 3 1 3 2 4 1 4 2 1 4 2 4 1 4 2 1

4 2 4 2 1 3 3 + 3 3 3 + 3 3 1 2 4 2

A♭ Harmonic Minor

4 1 1 4 1 2 2 4 1 1 4 1 2 2 3 + 1 3 1 2 2 3 2 2 1 3 1 + 3 2 2 1 4 1 1 4 2 2 1 4 1 1

A♭ Melodic Minor

4 1 1 4 1 4 2 4 1 1 4 1 4 2 3 + 1 3 1 3 2 3 1 2 1 3 1 + 3 1 2 1 4 1 1 4 1 2 1 4 1 1

A♭ Minor

4 1 4 4 1 3 3 + 3 3 3 + 3 3 1 4 4 1

A Major

0 1 4 0 1 4 2 4 1 2 4 1 4 2 3 1 3 1 3 1 2 3 2 1 3 1 3 1 3 2 4 1 4 2 1 4 2 4 1 0 4 1

All Scales & Arpeggios

A Major

A Harmonic Minor

A Melodic Minor

A Minor

A# Harmonic Minor

A# Melodic Minor

A# Minor

All Scales & Arpeggios

Bb Major

1 4 0 1 4 0 2 4 1 4 1 4 + 2

3 1 3 1 3 1 2 3 2 1 3 1 3 1 3 2 + 4 1 4 1 4 2 0 4 1 0 4

1 0 4 2 1 4

+ 3 + 3 + 3 + 4 1 2 4 0

Bb Harmonic Minor

1 4 1 4 1 2 2 4 1 1 4 1 2 2

3 + 1 3 1 2 2 3 2 2 1 3 1 + 3 2 2 1 4 1 1 4 2 2 1 4 1 4

Bb Melodic Minor

1 4 1 4 1 4 2 4 1 1 4 1 3 2

3 + 1 3 1 3 2 3 1 2 1 3 1 + 3 1 2 1 4 1 1 4 1 2 1 4 1 4

Bb Minor

1 4 2 4 1 4

+ 3 + 3 + 3 + 4 1 4 2 4 1

